



# GAT MONTHLY MEMBERSHIP PROGRESS REPORT

Results as of: 5/31/2024

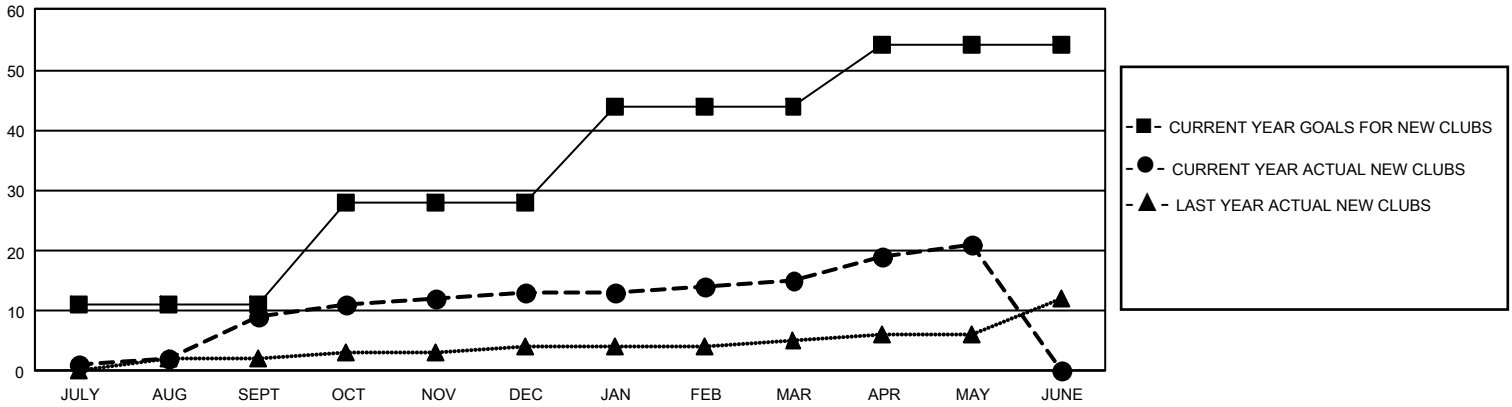
## GMT Constitutional Area 1, Group A

REPORT DOES NOT INCLUDE CLUBS IN UNDISTRICTED AREAS.

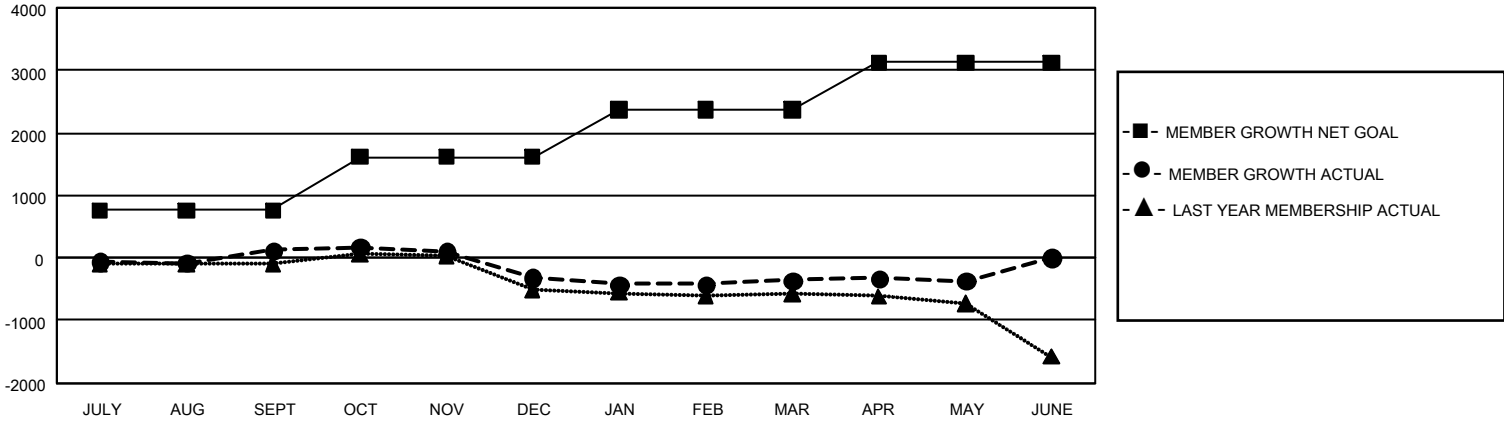
Clubs			
RESULTS FOR 2023-2024			
QUARTER	NEW CLUB GOAL	NEW CLUBS	DROPPED CLUBS
JULY/AUG/SEPT	33	9	11
OCT/NOV/DEC	51	4	16
JAN/FEB/MAR	48	2	4
APR/MAY/JUNE	30	6	3

Members			
RESULTS FOR 2023-2024			
QUARTER	MEMBER GROWTH NET GOAL	MEMBER GROWTH ACTUAL	DROPPED MEMBERS ACTUAL (including transfers)
JULY/AUG/SEPT	765	1,569	1,272
OCT/NOV/DEC	850	1,095	1,444
JAN/FEB/MAR	748	1,254	1,210
APR/MAY/JUNE	763	812	773

GOALS AND ACTUAL NEW CLUBS CUMULATIVE



GOALS AND ACTUAL MEMBERS CUMULATIVE



<b>DROPPED CLUBS: 34</b>	861 CLUBS OF 1,426 ADDED 1 OR MORE NEW MEMBERS	<b>GENDER DISTRIBUTION</b>	
		MALE 23,506 (63.03%) FEMALE 13,769 (36.92%) NON BINARY 7 (0.02%) PREFER NOT TO ANSWER 13 (0.03%)	
<b>DROPPED MEMBERS</b>		<a href="#">CLICK HERE FOR CUMULATIVE MEMBERSHIP DATA</a>	
DECEASED 463 CLUB CANCELLED 133 OTHER 4,088 <b>TOTAL 4,684</b>		TOTAL FAMILY UNIT MEMBERS 6,007 FAMILY MEMBERS PAYING HALF DUES 3,083	